

AKIPS
USER GUIDE

© 2022 AKIPS Holdings Pty Ltd

All rights reserved worldwide. No part of this document may be reproduced by any means, nor modified, decompiled, disassembled, published or distributed, in whole or in part, or translated to any electronic medium or other means, without the written consent of AKIPS Holdings Pty Ltd.

All rights, title and interest in and to the software documentation are and shall remain the exclusive property of AKIPS and its licensors.

All other trademarks contained in this document are the property of their respective owners.

Disclaimer

While the publisher (AKIPS Pty Ltd) has taken every precaution in the preparation of this guide to ensure that the information and instructions contained herein are accurate at the date of publication, it makes no expressed or implied warranty of any kind, and disclaims all responsibility for errors or omissions. The publisher assumes no liability for incidental or consequential losses or damages in connection with, or arising out of, the use of the information contained herein.

Edition	Software release	Date
18	22.10	December 2022

Table of Contents

1 ABOUT THIS GUIDE	4
1.1 TEXT CONVENTIONS.....	4
1.2 SYNTAX	5
2 DASHBOARDS	6
2.1 EVENTS DASHBOARD.....	6
2.1.1 <i>Impact assessment</i>	6
2.1.2 <i>Status exceptions</i>	6
2.1.3 <i>Graphs</i>	7
2.1.4 <i>IPv4 ping availability</i>	8
2.1.5 <i>SNMP availability</i>	8
2.1.6 <i>Interface status availability</i>	8
2.2 DEVICE DASHBOARD	8
2.2.1 <i>Graphs</i>	9
2.2.2 <i>Status exceptions</i>	9
2.2.3 <i>Device groups</i>	10
2.1.7 <i>Availability</i>	10
2.2.4 <i>Vitals</i>	10
2.2.5 <i>Interfaces</i>	10
2.2.6 <i>Syslog</i>	10
2.3 INTERFACE DASHBOARD	10
2.3.1 <i>Overview</i>	11
2.1.8 <i>Usage</i>	11
2.3.2 <i>Graphs</i>	11
2.3.3 <i>Device groups</i>	11
2.3.4 <i>Interface groups</i>	11
2.3.5 <i>Address</i>	11
3 REPORTS	12
3.1 DEVICE SUMMARY	12
3.1.1 <i>View the total number of devices:</i>	12
3.1.2 <i>See an overview of an individual device:</i>	12
3.2 UNREACHABLE DEVICES	13
3.2.1 <i>Display unreachable devices:</i>	13
3.2.2 <i>Place unreachable devices into maintenance mode:</i>	13
3.2.3 <i>Deleting unreachable devices</i>	14
3.3 AVAILABILITY REPORTER	14
3.3.1 <i>View the availability reporter:</i>	14
3.4 NETFLOW REPORTER	15
3.4.1 <i>Generate a table:</i>	15
3.4.2 <i>To generate a bar graph:</i>	15
3.4.3 <i>Display the disk usage:</i>	16
3.4.4 <i>Display unknown ports:</i>	16
3.5 TRAP REPORTER	16
3.5.1 <i>Use the trap reporter:</i>	16
3.6 SWITCH PORT MAPPER	16
3.6.1 <i>Use switch port mapper:</i>	16
4 REGEX FILTERS	17
4.1 CHECK YOUR REGEX:.....	17
4.2 GROUP FILTER	18

5 CUSTOMISING GRAPHS	19
5.1 CHANGING THE HEIGHT OR WIDTH OF A GRAPH	19
5.1.1 <i>Change the height of a graph:</i>	19
5.1.2 <i>Change the width of a graph:</i>	19
5.2 REMOVING THE TITLE OR SUBTITLE FROM A GRAPH	20
5.2.1 <i>Remove a title:</i>	20
5.2.2 <i>Remove a subtitle:</i>	20
5.3 REMOVING THE DATE, NAVIGATION OR STATISTICS FROM A GRAPH	21
5.3.2 <i>Remove the date from a graph:</i>	21
5.3.3 <i>Remove the navigation controls from a graph:</i>	21
5.3.4 <i>Remove the statistics from a graph:</i>	21
6 CSV OUTPUT	22
6.1 EXPORT REPORTS IN CSV FORMAT:	22
7 USER SETTINGS	23
7.1 SWITCHING TO A DIFFERENT PROFILE GROUP	23
7.1.1 <i>Switch to a different profile group:</i>	23
7.2 CHANGING YOUR PASSWORD	24
7.2.1 <i>To change your password:</i>	25
7.3 MUTING ALERTS	24
7.3.1 <i>Mute alerts:</i>	24
7.3.2 <i>Resume alerts:</i>	24
7.4 HIDING UNUSED REPORTS	24
7.4.1 <i>Hide unused reports on your network:</i>	24
7.4.2 <i>Show unused reports on your network:</i>	24
8 TRAINING	25

1 About this guide

The AKIPS *User guide* introduces the features available to users of AKIPS Network Monitoring Software.

The following **Abbreviations** (see 1.1), **Text conventions** (see 1.2) and **Syntax** (see 1.3) are used throughout AKIPS' guides.

1.1 Text conventions

Menu options are in **bold**.

E.g. **Go to Admin > System > System Settings**

Bold is also used for emphasis or clarity.

E.g. The **backup server** must have double the disk space of the **production server**.

Links to other parts of this guide are shown as **red** boxes.

E.g. The following **Text conventions** (see 1.2) and **Syntax** (see 1.3) are used throughout AKIPS' guides.

Websites and email addresses are in **blue**.

E.g. <https://www.akips.com>

Code is in **monospace**.

Further:

Command syntax is in **red monospace**.

E.g. `{ddd} {hh:mm} to {hh:mm}`

Input (by the user) is in **blue monospace**.

E.g. `tf dump last7d`

Output (by AKIPS) is in **cyan monospace**.

E.g. `cisco-74-1-1 sys ip4addr = 10.74.1.1`

1.2 Syntax

Syntax may be presented in this guide across multiple lines due to layout constraints. When using AKIPS, you may need to run commands in a single line.

Parameters (fields expecting a substituted value) are contained within { } (braces).

E.g. `{type} {value}`

Optional parameters are contained within [] (square brackets).

E.g. `[index, {description}]`

Optional parameters may be nested.

E.g. `mlist {type} [{parent regex} [{child regex} [{attribute regex}]]]`

For values separated by a | (pipe), choose one option only.

E.g. `[any|all|not group {group name} ...]`

Multiple parameters will have an ... (ellipsis).

E.g. `not group {group name} ...`

2 Dashboards

2.1 Events dashboard

The events dashboard displays key information relating to events on your network. You can access the events dashboard by going to **Dashboards > Events**. From the drop-down list, select an individual vendor or leave as **All Groups** (default).

AKIPS will not display events which you have discarded through:

- muting alerts (see 7.3)
- auto grouping (refer to the 'Grouping' chapter in the *AKIPS Administrator guide*).

To view the video *AKIPS events dashboard*, visit <https://vimeo.com/manage/videos/612187602>

2.1.1 Impact assessment

The impact assessment table (see 2.1) shows details of any unreachable devices in your network, so you can assess the impact of these on your organisation.

2.1.2 Status exceptions

AKIPS populates the status exceptions table (see 2.1) from status alerts and attributes which you can configure through auto grouping.

Refer to the 'Alerts' and 'Grouping' chapters in the *AKIPS Administrator guide*.

DASHBOARDS



Graphic 15. Navigating the events dashboard

1. impact assessment table (see 2.1.1);
2. status exceptions table (see 2.1.2);
3. graphs (see 2.1.3);
4. IPv4 ping availability chart (see 2.1.4);
5. SNMP availability chart (see 2.1.5);
6. interface status availability chart (see 2.1.6).

2.1.3 Graphs

AKiPS collects data every 60 seconds and plots graphs (see 2.1) according to your selected timeframe.

The **critical events** graph plots events which you have defined as critical, e.g. core interfaces failing. Refer to the 'Alerts' chapter in the *AKiPS Administrator guide*.

The **critical thresholds** graph displays counters/gauges/meters which have failed to meet thresholds which you have defined as critical.

The **events** graph plots the results of outages and changes, including for ping, SNMP, Cisco IPSLA and spanning tree.

The **thresholds** graph charts any events in breach of threshold rules which you have defined. Refer to the 'Alerts' chapter in the *AKiPS Administrator guide*.

DASHBOARDS

The **syslog** graph displays syslog entries which AKIPS has received according to your selected timeframe.

The **traps** graph charts the number of trap messages from devices which you have configured to send messages to AKIPS. Although AKIPS catches traps immediately, the dashboard takes 60 seconds to refresh.

When you point to a position on a graph, it highlights an interval. You can drill down to 60-second intervals.

2.1.4 IPv4 ping availability

The IPv4 ping availability chart (see 2.1) displays the ping results for the previous 24 hours with availability targets which you have set (between 95 and 100 per cent).

Refer to the 'Availability' chapter in the *AKIPS Administrator guide*.

2.1.5 SNMP availability

The SNMP availability chart (see 2.1) displays the SNMP results for the previous 24 hours with availability targets which you have set (between 95 and 100 per cent).

Refer to the 'Availability' chapter in the *AKIPS Administrator guide*.

2.1.6 Interface status availability

The interface status availability chart (see 2.1) displays the interface results for the previous 24 hours with availability targets which you have set.

Refer to the 'Availability' chapter in the *AKIPS Administrator guide*.

2.2 Device dashboard

The device dashboard provides reports on an individual device and its related interfaces.

The device and events dashboards share many of the same graphs and charts.

You can access the device dashboard by:

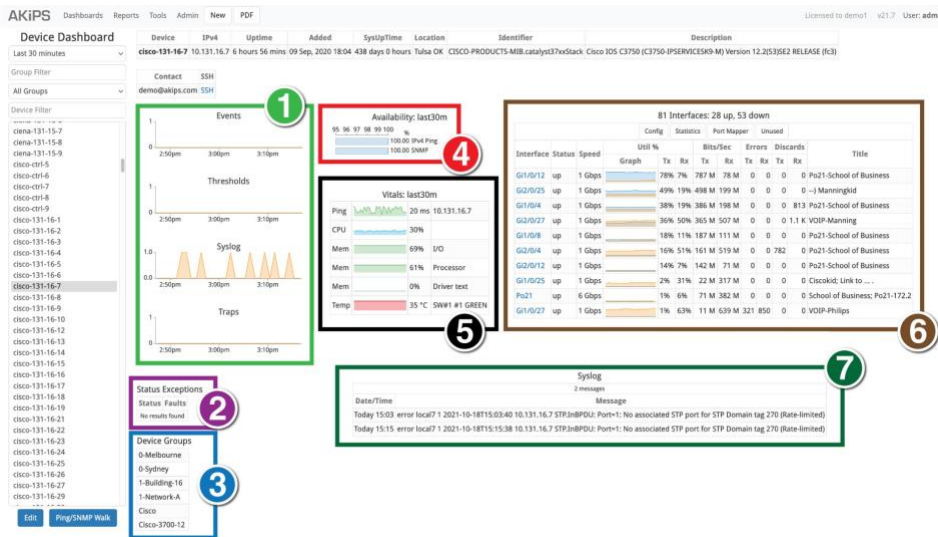
- going to **Dashboards > Device** and selecting a device
- clicking a specific device on the events dashboard (see 2.1).

To edit the device's configuration, click **Edit**.

To ping or walk the device, click **Ping/SNMP Walk**.

To view the video *AKIPS device and interface dashboards*, visit <https://vimeo.com/manage/videos/619559203>

DASHBOARDS



Graphic 16. Navigating the device dashboard

1. graphs (see 2.2.1);
2. status exceptions table (see 2.2.2);
3. device groups table (see 2.2.3);
4. availability chart (see 2.2.4);
5. vitals chart (see 2.2.5);
6. interfaces table (see 2.2.6);
7. syslog table (see 2.2.7).

2.2.1 Graphs

AKIPS collects data every 60 seconds and plots graphs (see 2.2) according to your selected timeframe.

The **events** graph plots the results of outages and changes, including for ping, SNMP, Cisco IPSLA and spanning tree.

The **thresholds** graph charts any events in breach of threshold rules which you have defined. Refer to the 'Alerts' chapter in the *AKIPS Administrator guide*.

The **syslog** graph displays syslog entries which AKIPS has received according to your selected timeframe.

The **traps** graph charts the number of trap messages from devices which you have configured to send messages to AKIPS. Although AKIPS catches traps immediately, the dashboard takes 60 seconds to refresh.

When you point to a position on a graph, it highlights an interval. You can drill down to 60-second intervals.

2.2.2 Status exceptions

AKIPS populates the status exceptions table (see 2.2) from status alerts and attributes which you can configure through auto grouping.

Refer to the 'Alerts' and 'Grouping' chapters in the *AKIPS Administrator guide*.

2.2.3 Device groups

The device groups table (see 2.2) lists the groups to which you have assigned the device. Refer to the 'Grouping' chapter in the *AKIPS Administrator guide*.

2.2.4 Availability

The availability chart (see 2.2) displays the ping and SNMP reachability (between 95 and 100 per cent) for the device for the past 30 minutes.

Refer to the 'Availability' chapter in the *AKIPS Administrator guide*.

2.2.5 Vitals

The vitals chart (see 2.2) shows vital statistics for the device for the past 30 minutes.

2.2.6 Interfaces

The interfaces table (see 2.2) displays all interfaces relating to the device, showing what is up and down, their speeds and traffic.

The **Config** button opens the interface configuration report for the device.

The **Statistics** button provides traffic data (bits/bytes/packets) and graphs for each interface on the device, along with any errors and discards.

The **Port Mapper** button displays the ARP and VLAN tables as well as a list of the addresses on the interface.

The **Unused** button provides details of any unused interfaces on the device.

2.2.7 Syslog

The syslog table (see 2.2) shows all syslog messages for the device for the past 30 minutes.

2.3 Interface dashboard

The interface dashboard provides reports on an individual interface. You can access the interface dashboard by:

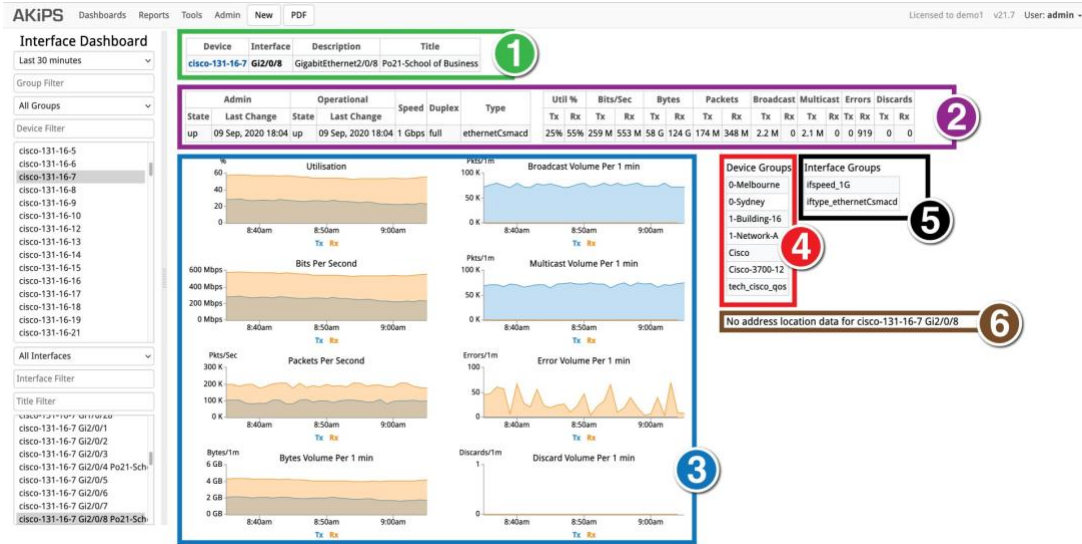
- going to Dashboards > Interface and selecting a device and then an interface
- clicking a specific interface on the device dashboard (see 2.2).

To view the video *AKIPS device and interface dashboards*, visit <https://vimeo.com/manage/videos/619559203>

DASHBOARDS

2.3.1 Overview

The overview table (see 2.3) provides an overview of the interface. It links to the device dashboard (see 2.2).



Graphic 17. Navigating the interface dashboard

1. overview table (see 2.3.1); 2. usage tables (see 2.3.2); graphs (see 2.3.3); 4. device groups table (see 2.3.4); 5. interface groups table (see 2.3.5); 6. address parameter (see 2.3.6).

2.1.7 Usage

The usage tables (see 2.3) provide state and speed details for the interface, along with transmit receipts, errors and discards.

2.3.2 Graphs

AKIPS collects data every 60 seconds and plots graphs (see 2.3) according to your selected timeframe. When you point to a position on a graph, it highlights an interval. You can drill down to 60-second intervals.

2.3.3 Device groups

The device groups table (see 2.3) lists the groups to which you have assigned the interface's device. Refer to the 'Grouping' chapter in the AKIPS Administrator guide.

2.3.4 Interface groups

The interface groups table (see 2.3) lists the groups to which you have assigned the interface. Refer to the 'Grouping' chapter in the AKIPS Administrator guide.

2.3.5 Address

If you have configured the interface in switch port mapper (see 3.6), the address parameter (see 2.3) shows a list of the addresses on the interface.

3 Reports

3.1 Device summary

The device summary shows:

- the total number of devices AKIPS is monitoring on your network
- an overview of individual devices.

3.1.1 View the total number of devices:

Go to **Reports > Device > Summary**.

Device	IPv4	SysUpTime	Added	Location	Identifier	Description
accedian-131-2-1	10.131.2.1	425 days 2 hours	Thu, 13 May 03:07	Phoenix AZ	ACD-DESC-MIB.acdDesc	AMN-1000-GT
accedian-131-2-2	10.131.2.2	101 days 8 hours	Thu, 13 May 03:07	Minneapolis MN	ACD-DESC-MIB.acdDesc	AMN-1000-GT
accedian-131-2-3	10.131.2.3	247 days 8 hours	09 Sep, 2020 18:04	Honolulu HI	ACD-DESC-MIB.acdDesc	AMN-1000-GT
accedian-131-2-4	10.131.2.4	334 days 21 hours	09 Sep, 2020 18:04	Cincinnati OH	ACD-DESC-MIB.acdDesc	AMN-1000-GT
accedian-131-2-5	10.131.2.5	168 days 3 hours	09 Sep, 2020 18:04	Winnipeg MB	ACD-DESC-MIB.acdDesc	AMN-1000-GT
accedian-131-2-6	10.131.2.6	211 days 0 hours	09 Sep, 2020 18:04	Nagreg NZ	ACD-DESC-MIB.acdDesc	AMN-1000-GT
accedian-131-2-7	10.131.2.7	167 days 1 hour	09 Sep, 2020 18:04	Gold Coast AU	ACD-DESC-MIB.acdDesc	AMN-1000-GT
accedian-131-2-8	10.131.2.8	420 days 22 hours	09 Sep, 2020 18:04	San Francisco CA	ACD-DESC-MIB.acdDesc	AMN-1000-GT
accedian-131-2-9	10.131.2.9	449 days 21 hours	09 Sep, 2020 18:04	Omaha NE	ACD-DESC-MIB.acdDesc	AMN-1000-GT
accedian-131-2-10	10.131.2.10	163 days 19 hours	09 Sep, 2020 18:04	Memphis TN	ACD-DESC-MIB.acdDesc	AMN-1000-GT
accedian-131-2-11	10.131.2.11	176 days 20 hours	09 Sep, 2020 18:04	El Paso TX	ACD-DESC-MIB.acdDesc	AMN-1000-GT
accedian-131-2-12	10.131.2.12	175 days 23 hours	09 Sep, 2020 18:04	Charlotte NC	ACD-DESC-MIB.acdDesc	AMN-1000-GT
accedian-131-2-13	10.131.2.13	69 days 0 hours	09 Sep, 2020 18:04	Toronto ON	ACD-DESC-MIB.acdDesc	AMN-1000-GT
accedian-131-2-14	10.131.2.14	409 days 8 hours	Thu, 13 May 03:07	Christchurch NZ	ACD-DESC-MIB.acdDesc	AMN-1000-GT
accedian-131-2-15	10.131.2.15	457 days 10 hours	Thu, 13 May 03:07	Washington DC	ACD-DESC-MIB.acdDesc	AMN-1000-GT
adv-131-0-1	10.131.0.1	481 days 22 hours	09 Sep, 2020 18:04	Tampa FL	FspR7-MIB.fspR7V1	Fiber Service Platform F7
aerohive-131-3-1	10.131.3.1	228 days 20 hours	09 Sep, 2020 18:04	New York NY	AH-SMI-MIB.ahProduct	AP230 HiveOS 8.2r2 build-196060
aerohive-131-3-2	10.131.3.2	361 days 19 hours	09 Sep, 2020 18:04	Las Vegas NV	AH-SMI-MIB.ahProduct	AP230 HiveOS 6.5r9a build-194750
aerohive-131-3-3	10.131.3.3	370 days 18 hours	09 Sep, 2020 18:04	Dallas TX	AH-SMI-MIB.ahProduct	AP230 HiveOS 6.2r4 build-207023
aerohive-131-3-4	10.131.3.4	303 days 19 hours	09 Sep, 2020 18:04	Austin TX	AH-SMI-MIB.ahProduct	AP230 HiveOS 6.6r1b release build2338
aerohive-131-3-5	10.131.3.5	389 days 13 hours	09 Sep, 2020 18:04	Edmonton AB	AH-SMI-MIB.ahProduct	SR2148P HiveOS 6.5r6 build-149161
aerohive-131-3-6	10.131.3.6	308 days 18 hours	09 Sep, 2020 18:04	Sydney AU	EdgeSwitch-REF-MIB.broadcom	Aerohive SR2208P-8 GE PoE+ ports 2 GE dual media ports 1.0.1.22 Linux 3.6.5
alcatel-131-78-1	10.131.78.1	391 days 21 hours	Mon, 20 Sep 14:10	Dunedin NZ	ALCATEL-IND1-DEVICES.alcatelIND1DevicesMIB.12.1.2	Alcatel-Lucent OS6450-P10 6.3.520.R01 Service Release November 26 2015.
alcatel-131-78-2	10.131.78.2	245 days 11 hours	Mon, 20 Sep 14:10	Adelaide AU	unknown.object	Alcatel-Lucent OS6900-X40 7.3.4.236.R02 Service Release November 13 2015.
alcatel-131-78-3	10.131.78.3	293 days 2 hours	Mon, 20 Sep 14:10	San Diego CA	unknown.object	Alcatel-Lucent OS6900-X40 7.3.4.236.R02 Service Release November 13 2015.

Graphic 18: viewing the total number of devices in AKIPS

3.1.2 See an overview of an individual device:

From the list, select an individual device.

3.2 Unreachable devices

The unreachable devices report provides details of any devices which AKIPS cannot currently reach.

To determine reachability, AKIPS sends ping and SNMP requests at the following intervals:

Request	Interval	Considered down when unresponsive for
ping	15 seconds	45 seconds
SNMP	60 seconds	120 seconds

To view the video *AKIPS unreachable devices report*, visit <https://vimeo.com/manage/videos/538524106>

3.2.1 Display unreachable devices:

Go to **Reports > Device > Unreachable**.

You can refine the report by using the filter options.

3.2.2 Place unreachable devices into maintenance mode:

Go to **Reports > Device > Unreachable**.

You can refine the report by using the filter options.

To place all unreachable devices into maintenance mode:

Click **Select All**.

To place individual unreachable devices into maintenance mode:

Select the checkboxes next to specific devices.

Click **Maintenance Mode**.

Click **OK**.

3.2.3 Deleting unreachable devices

Go to **Reports > Device > Unreachable**.

You can refine the report by using the filter options.

To delete all unreachable devices:

Click **Select All**.

To delete individual unreachable devices:

Select the checkboxes next to specific devices.

Click **Delete**.

Click **OK**.

3.3 Availability reporter

3.3.1 View the availability reporter:

Go to **Tools > Availability**.

You can refine the report by using the filter options:

Option	Action
time range	defines the time range of the report
report	charts one or all of the following: IPv4 Ping, IPv6 Ping, Interface Status, SNMP
sorts	sorts devices either alphabetically (Sort Name), or from least used to most used (Sort Availability)
show	shows either all devices (Show All), or only those which have not met their target (Show Failed)

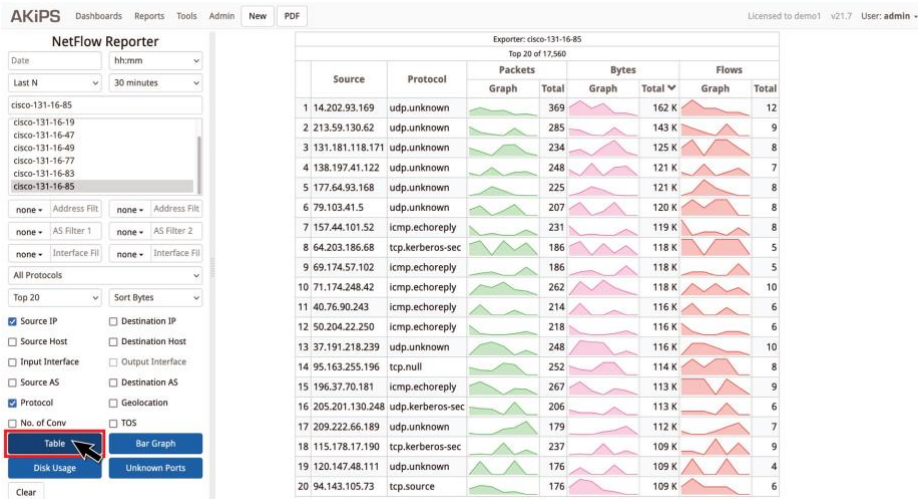
3.4 NetFlow reporter

3.4.1 Generate a table:

Go to **Tools > NetFlow**. Select a device.

You can refine the report by using the filter options.

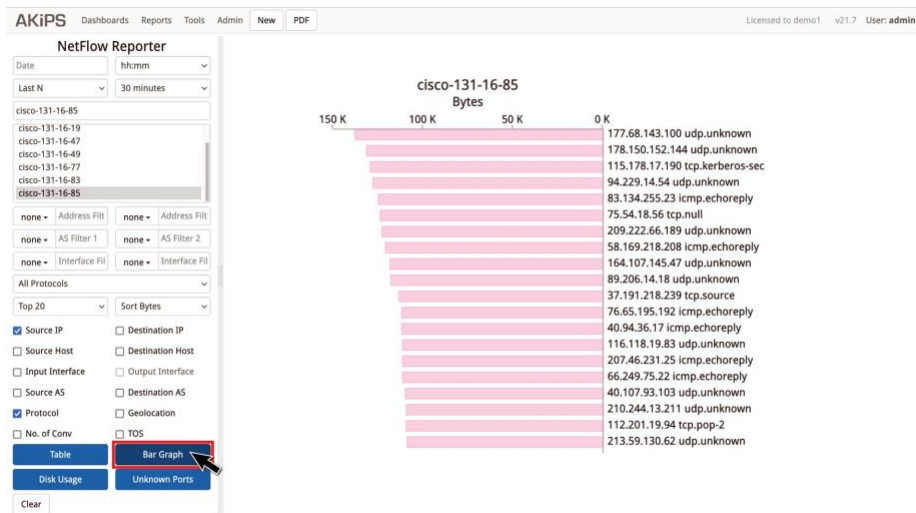
Click **Table**.



Graphic 19. Viewing the NetFlow reporter as a table

3.4.2 To generate a bar graph:

Click **Bar Graph**.



Graphic 20. Viewing the NetFlow reporter as a bar graph

3.4.3 Display the disk usage:

Click **Disk Usage**.

3.4.4 Display unknown ports:0.

Click **Unknown Ports**.

3.5 Trap reporter

3.5.1 Use the trap reporter:

Go to **Tools > SNMP Traps**.

Using the filter options, set the time and device filters. Click **Top Talkers**.

3.6 Switch port mapper

Every hour, switch port mapper walks the:

- ARP and bridge tables
- IP and MAC addresses.

3.6.1 Use switch port mapper:

Go to **Tools > Switch Port Mapper**.

In the **Address Locator** text field, enter an IPv4/6 or MAC address.

To search for the switch, click **Search**.

To display the mapping history for the switch, click **History**. You can refine the report by using the filter options.

4 Regex filters

You can use regex to filter data in **Dashboards** (see 2) and **Reports** (see 3).

For information on regex, refer to *Regular Expressions Cookbook* (Goyvaerts & Levithan, 2012).

Examples: Must match akips09 or akips134:

```
/akips09|akips134/
```

Must match AKDSQ, AKDSI, AKDPR, MSD or EIA:

```
/AKDSQ|AKDSI|AKDPR|MSD|EIA/
```

Match anything with SD followed by any number from 4 to 9:

```
/SD[4-9]/
```

Match anything that starts with fa or gi and only those from 0 to 5:

```
/^(fa|gi)[0-5]/
```

4.1 Check your regex:

Go to **Tools > Regex Checker**. Paste sample text into the text field.

Type the regex you want to check, *without / /* (forward slashes), into the **Regex** text field.

Click **Test Regex**.

REGEX FILTERS

IP address filter

Metacharacter	Description	Notes	Example
*	wildcard		10.1.11.*
-	range		10.1.11.0-9
!	negate rule	use only for NetFlow/trap/ syslog reports	!10.1.11.7
/	CIDR notation	use to apply Netmask to the IP address	10.1.11.7/16

4.2 Group filter

Metacharacter	Description
/	(mandatory) binds all expressions
*	matches the preceding element zero or more times
+	matches the preceding element one or more times
^	start with
.	matches a single character
\$	end with
[]	matches a single character contained within
[^]	matches a single character not contained within
()	a marked subexpression
	or

5 Customising graphs

You can customise graphs in **Dashboards** (see 2) and **Reports** (see 3) by editing the url.

Individual commands in the url are separated by a ; (semicolon). To view the video *Customising graphs in AKIPS*, visit <https://vimeo.com/manage/videos/533784803>

5.1 Changing the height or width of a graph

5.1.1. Change the height of a graph:

If the url includes a height component:

In the url, replace the height with your required height in pixels (maximum 1469).

If the url does not include a height component:

In the graph navigation controls, click either – (minus) or + (plus) next to **Height**. This will change the graph height and display it in the url.

Replace the height with your required height in pixels (maximum 1469).

Hit **Enter**.

5.1.2 Change the width of a graph:

If the url includes a width component:

In the url, replace the width with your required width in pixels.

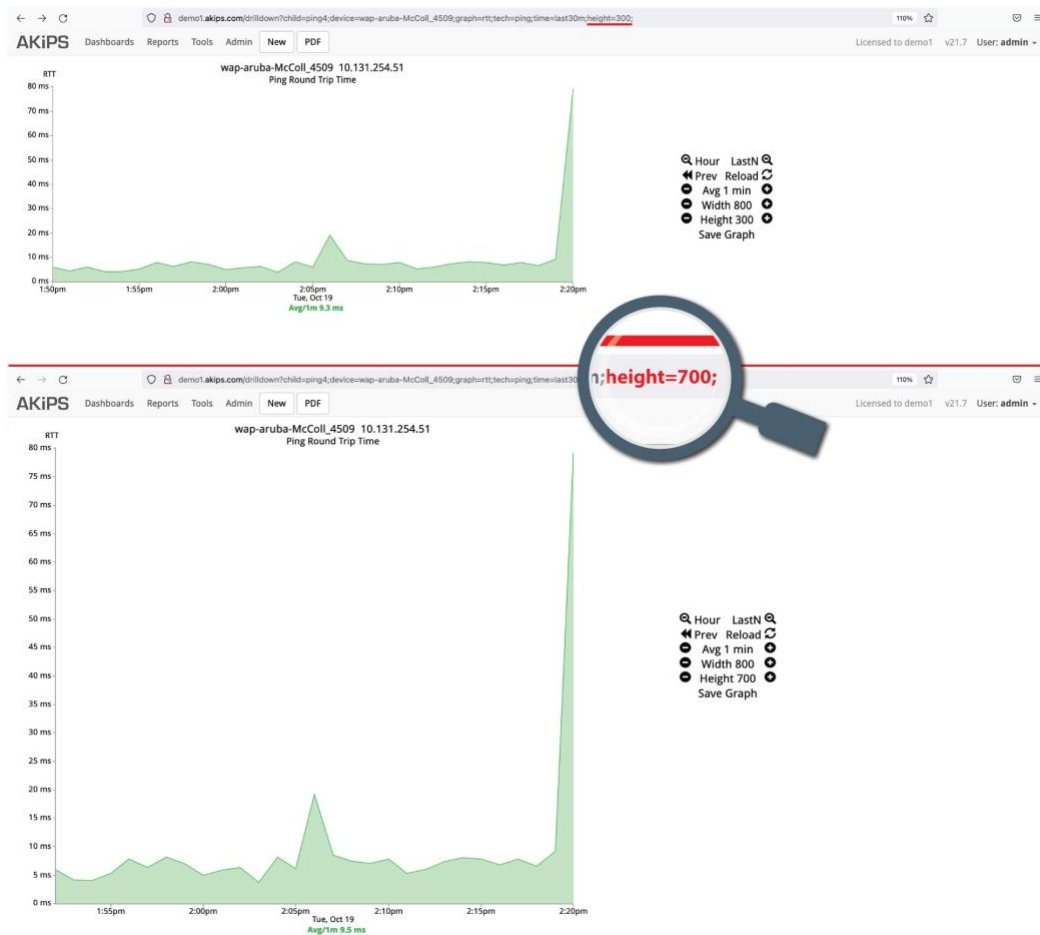
If the url does not include a width component:

In the graph navigation controls, click either – (minus) or + (plus) next to **Width**. This will change the graph width and display it in the url.

Replace the width with your required width in pixels.

Hit **Enter**.

CUSTOMISING GRAPHS



Graphic 21. Changing the height of a graph

5.2 Removing the title or subtitle from a graph

5.2.1 Remove a title:

In the url, delete the text in the title component following `title=`

E.g. for `title=cisco-131-16-137`, delete `cisco-131-16-137`

If the url does not include a title component, add `title=`

5.2.2 Remove a subtitle:

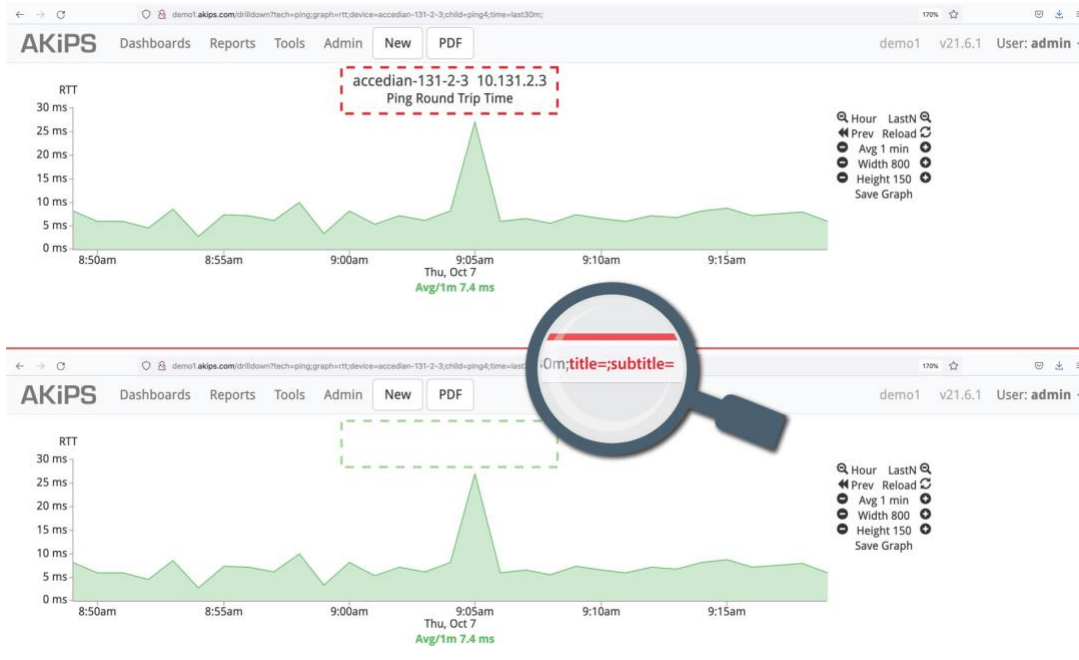
In the url, delete the text in the subtitle component following `subtitle=`

E.g. for `subtitle=cisco-cpu`, delete `cisco-cpu`

If the url does not include a subtitle component, add `subtitle=`

Hit **Enter**.

CUSTOMISING GRAPHS



Graphic 22. Removing the title and subtitle from a graph

5.3 Removing the date, navigation or statistics from a graph

5.3.2 Remove the date from a graph:

In the url, add `date=0`

Hit **Enter**.

5.3.3 Remove the navigation controls from a graph:

In the url, add `nav=0`

Hit **Enter**.

5.3.4 Remove the statistics from a graph:

In the url, add `legend_stat=0`

Hit **Enter**.

6 CSV output

This feature is available whenever the AKIPS toolbar displays the **CSV** button.

6.1 Export reports in CSV format:

Click **CSV**.

Either open the file by selecting a program, or save it by clicking **Save File**.

Click **OK**.

The screenshot shows the AKIPS web interface. In the top navigation bar, the 'CSV' button is highlighted with a red dashed box and a mouse cursor. Below the navigation bar, there is a sidebar with filters and a main data table titled 'UPS Battery'. The table has columns for Device, Capacity, Voltage, Current, Temperature, Remaining, and Status. A red dashed box also highlights a file opening dialog box on the right side of the screen, which is titled 'Opening report.20211019.1148.csv'. The dialog box contains the following text:

You have chosen to open:
 report.20211019.1148.csv
 which is: CSV File
 from: http://demo1.akips.com

What should Firefox do with this file?
 Open with TextEdit (default)
 Save File
 Do this automatically for files like this from now on.

Buttons: Cancel, OK

Device	Capacity		Voltage		Current		Temperature		Remaining		Status
	Graph	Avg ^	Graph	Avg	Graph	Avg	Graph	Avg	Graph	Time	
socomec-131-66-3		0%		0 V		0 mA		33 °C		0 secs	unknown
liebert-131-40-6		55%		53 V		n/a		n/a		40 mins 0 secs	batteryNormal
apc-131-4-4		100%		218 V		n/a		37 °C		56 mins 0 secs	batteryNormal
apc-131-4-18		100%		216 V		n/a		36 °C		1 hour 14 mins	batteryNormal
apc-131-4-25		100%		55 V		n/a		36 °C		2 hours 8 mins	batteryNormal
eaton-131-20-2		100%		196 V		0 mA		n/a		2 hours 40 mins	batteryNormal
eaton-131-20-4		100%		195 V		0 mA		n/a		3 hours 51 mins	batteryNormal
eaton-131-20-7		100%		51 V		0 mA		n/a		8 hours 14 mins	batteryNormal
eaton-131-20-8		100%		197 V		0 mA		n/a		28 mins 0 secs	batteryNormal
eaton-131-20-9		100%		78 V		0 mA		n/a		6 hours 24 mins	batteryNormal
liebert-131-40-8		100%		54 V		n/a		n/a		30 mins 0 secs	batteryNormal
liebert-131-40-12		100%		54 V		n/a		n/a		46 mins 56 secs	batteryNormal
liebert-131-40-13		100%		53 V		n/a		n/a		1 hour 28 mins	batteryNormal
liebert-131-40-15		100%		54 V		n/a		n/a		12 mins 0 secs	batteryNormal
socomec-131-66-1		100%		54 V		6.5 KA		35 °C		45 days 7 hours	batteryNormal
socomec-131-66-2		100%		0 V		-100 mA		35 °C		-60 secs	batteryNormal
socomec-131-66-4		100%		54 V		0 mA		36 °C		45 days 7 hours	batteryNormal
tripplite-131-72-1		100%		274 V		n/a		n/a		0 secs	batteryNormal
tripplite-131-72-2		100%		274 V		n/a		n/a		0 secs	batteryNormal
tripplite-131-72-3		100%		274 V		n/a		n/a		0 secs	batteryNormal
tripplite-131-72-4		100%		27 V		n/a		35 °C		2 hours 10 mins	
tripplite-131-72-5		100%		27 V		n/a		36 °C		2 hours 10 mins	
tripplite-131-72-6		100%		27 V		n/a		36 °C		2 hours 10 mins	
tripplite-131-72-7		100%		274 V		n/a		n/a		0 secs	batteryNormal
ups		100%		27 V		n/a		27 °C		7 mins 31 secs	batteryNormal

Graphic 23. Exporting reports in CSV format

7 User settings

To view the video *AKIPS user settings*, visit <https://vimeo.com/manage/videos/537588719>

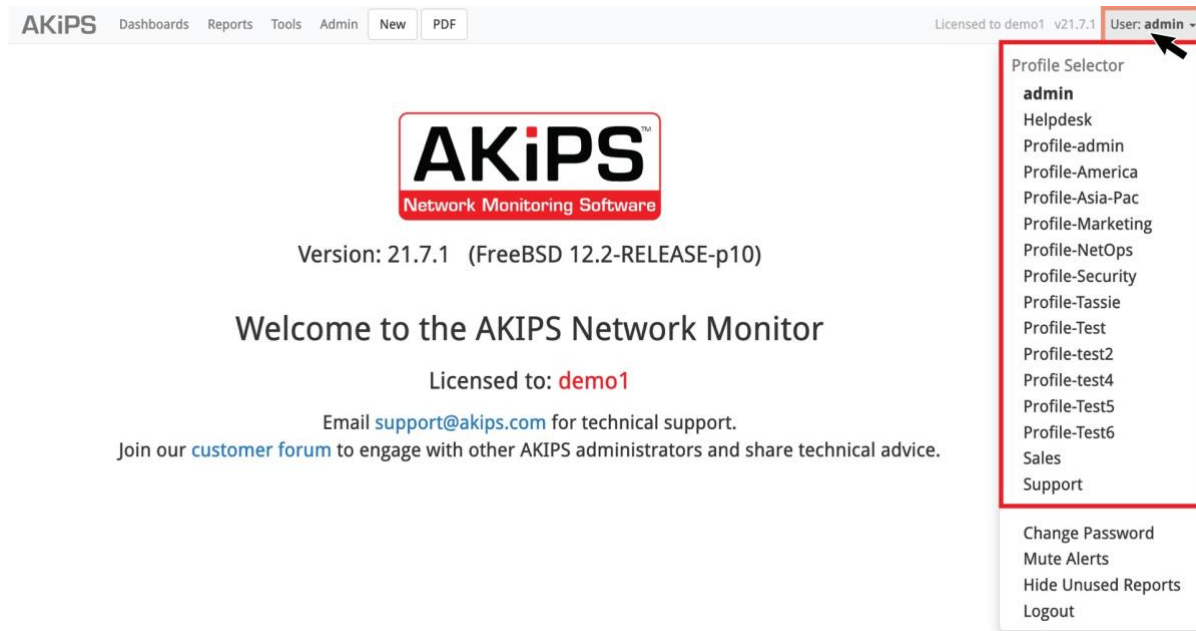
7.1 Switching to a different profile group

Users with admin rights can switch to a different profile group with different settings.

(To configure profile groups, refer to the 'Access control' chapter in the *AKIPS Administrator guide*.)

7.1.1 Switch to a different profile group:

Hover your cursor over **User**, located on the right-hand side of the menu bar. Select a profile.



Graphic 24. Switching to a different profile group

7.2 Changing your password

Hover your cursor over **User**, located on the right-hand side of the menu bar.

Select Change Password.

Complete the text fields.

Click **Change Password**.

7.3 Muting alerts

You can mute alerts which you have previously configured in AKIPS. (Refer to the 'Alerts' chapter in the *AKIPS Administrator guide*.)

7.3.1 Mute alerts:

Hover your cursor over **User**, located on the right-hand side of the menu bar.

Select Mute Alerts.

Click the button for the duration (from **1h** to **forever**) for which you would like to mute alerts.

7.3.2 Resume alerts:

Click **Cancel Mute**.

7.4 Hiding unused reports

AKIPS displays all vendor reports in the **Reports** menu, including those which your network is not using.

7.4.1 Hide unused reports on your network:

Hover your cursor over **User**, located on the right-hand side of the menu bar.

Select **Hide Unused Reports**.

7.4.2 Show unused reports on your network:

Select **Show All Reports**.

8 Training

To fully learn how to use AKIPS, you can register for training via <https://www.akips.com/showdoc/training>

Training provides timesaving guidance in:

- discover, grouping and availability
- events, alerting and thresholding
- the AKIPS UI
- syslog, NetFlow and advanced reporting
- tips and tricks
- administrator training
- what's new in AKIPS.