

AKIPS

Install & upgrade guide

© 2022 AKIPS Holdings Pty Ltd

All rights reserved worldwide. No part of this document may be reproduced by any means, nor modified, decompiled, disassembled, published or distributed, in whole or in part, or translated to any electronic medium or other means, without the written consent of AKIPS Holdings Pty Ltd.

All rights, title and interest in and to the software documentation are and shall remain the exclusive property of AKIPS and its licensors.

All other trademarks contained in this document are the property of their respective owners.

Disclaimer

While the publisher (AKIPS Pty Ltd) has taken every precaution in the preparation of this guide to ensure that the information and instructions contained herein are accurate at the date of publication, it makes no expressed or implied warranty of any kind, and disclaims all responsibility for errors or omissions. The publisher assumes no liability for incidental or consequential losses or damages in connection with, or arising out of, the use of the information contained herein.

Edition	Software release	Date
18	22.10	December 2022

Table of Contents

- 1 About this guide 3**
 - 1.1 Text conventions 3*

- 2 Platform requirements..... 4**
 - 2.1 Software..... 5*
 - 2.1.1 CPU 5*
 - 2.1.2 Storage..... 5*
 - 2.1.3 VMware 5*
 - 2.2 Hardware 5*

- 3 Installing AKIPS..... 6**
 - 3.1 Install AKIPS: 6*

- 4 Discovering your network 13**
 - 4.1 Discover your network: 13*

- 5 AKIPS licence 15**
 - 5.1 Request an AKIPS evaluation key:..... 15*
 - 5.2 Activate an AKIPS licence:..... 15*

- 6 Upgrading AKIPS..... 16**
 - 6.1 Case study 16*
 - 6.2 Upgrade AKIPS: 16*

1 About this guide

The AKIPS *Install & upgrade guide* assists users to install and upgrade AKIPS Network Monitoring Software.

1.1 Text conventions

Menu options are in **bold**.

E.g. **Go to Admin > System > System Settings**

Bold is also used for emphasis or clarity.

E.g. The **backup server** must have double the disk space of the production server.

Websites and email addresses are in **blue**. E.g. <https://www.akips.com>

2 Platform requirements

AKIPS is engineered for a VM environment.

Before installing AKIPS, ensure that your platform meets the following minimum requirements:

Number of interfaces Minimum requirements

up to 100,000	VM 2+ CPU cores 8 GB RAM 200 GB disk space
---------------	---

100,000 to 250,000	VM 4+ CPU cores 16 GB RAM 500 GB disk space
--------------------	--

250,000+	VM 8+ CPU cores 32 GB RAM 1 TB disk space
----------	--

If you are installing AKIPS onto a backup server, double the disk space listed.
(Refer to the 'Backing up AKIPS' chapter in the *AKIPS Backup & Restore guide*.)

To view the video *Deploying AKIPS on a VM vs hardware*, visit <https://vimeo.com/manage/videos/524030745>

2.1 Software

2.1.1 CPU

AKIPS requires dedicated CPUs.

CPU cores which are shared between VMs on a VM host will lead to CPU resource starvation.

This typically leads to:

- jumps in time
- gaps in polling
- false outage reports.

2.1.2 Storage

AKIPS runs a realtime database. Its performance depends on sequential read/write performance, and minimal storage fragmentation and latency.

AKIPS requires:

- preallocated/thick (not thin) provisioning
- eager (not lazy) zeroed.

2.1.3 VMware

When configuring a VMware guest:

- use an emulated LSI SCSI controller
- lock the MAC address to the VM.

2.2 Hardware

We recommend installing and evaluating AKIPS in a VM environment before investing in any hardware.

All hardware must be compatible with our FreeBSD OS.

AKIPS monitors 1,000,000+ interfaces without specialised hardware. However, it may require a dedicated RAID storage system instead of a SAN or NAS. In this case, contact support@akips.com to discuss your specific configuration needs.

3 Installing AKIPS

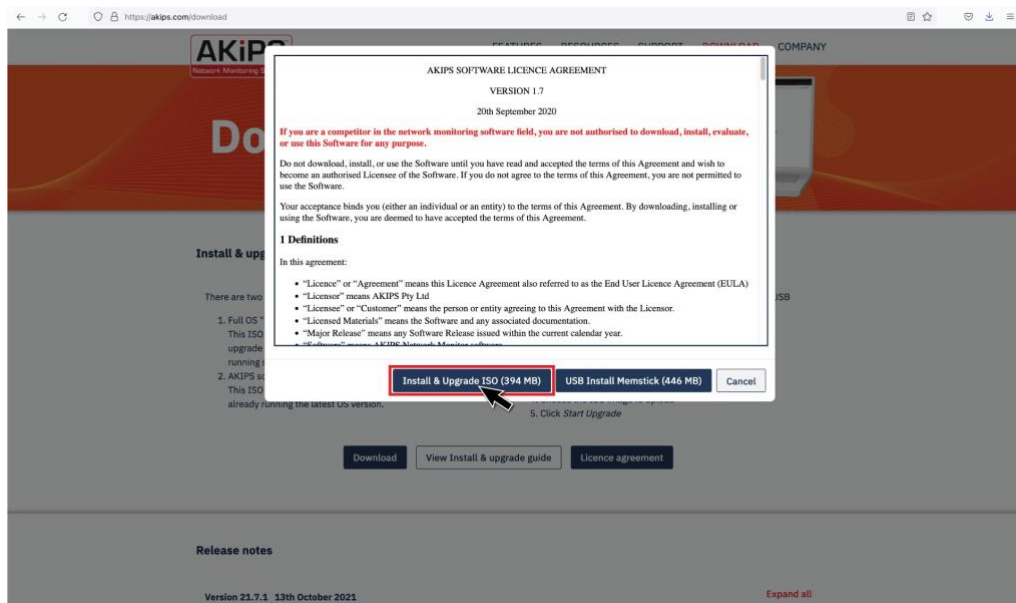
To view the video *Installing AKIPS*, visit <https://vimeo.com/manage/videos/521646329>

3.1 Install AKIPS:

Go to <https://www.akips.com/download>

In the **Install & upgrade** section, click **Download**. Read the *AKIPS Software Licence Agreement*.

Click **Install & Upgrade ISO** only if you agree to the terms.

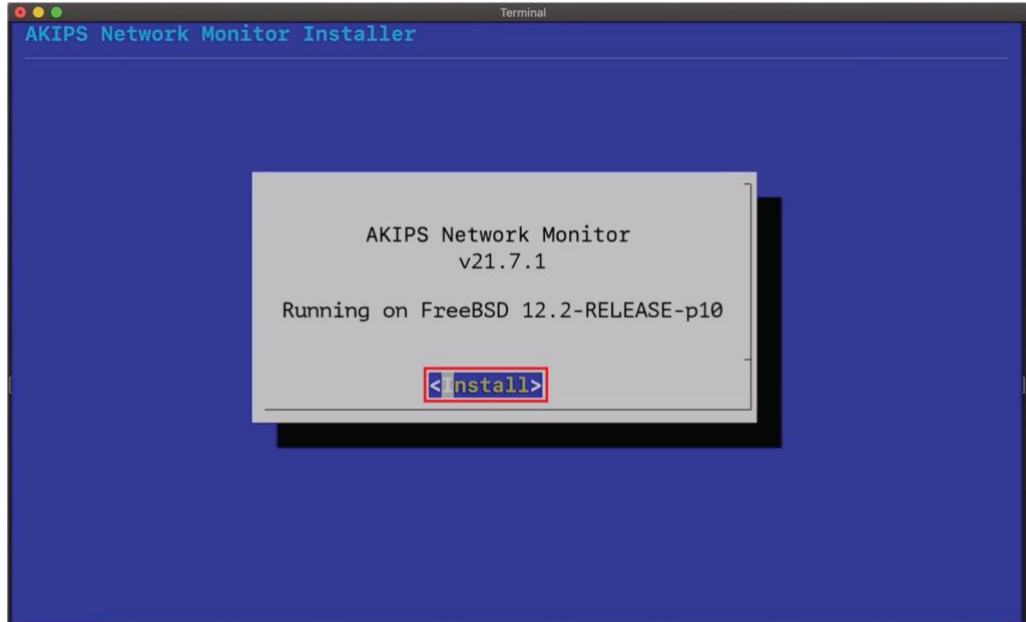


Graphic 1 Accepting the AKIPS licence agreement

Create the VM and attach the installer disk image file (ISO). Configure the VM settings and boot.

INSTALLING AKIPS

At the **AKIPS Network Monitor** screen, select **Install**.

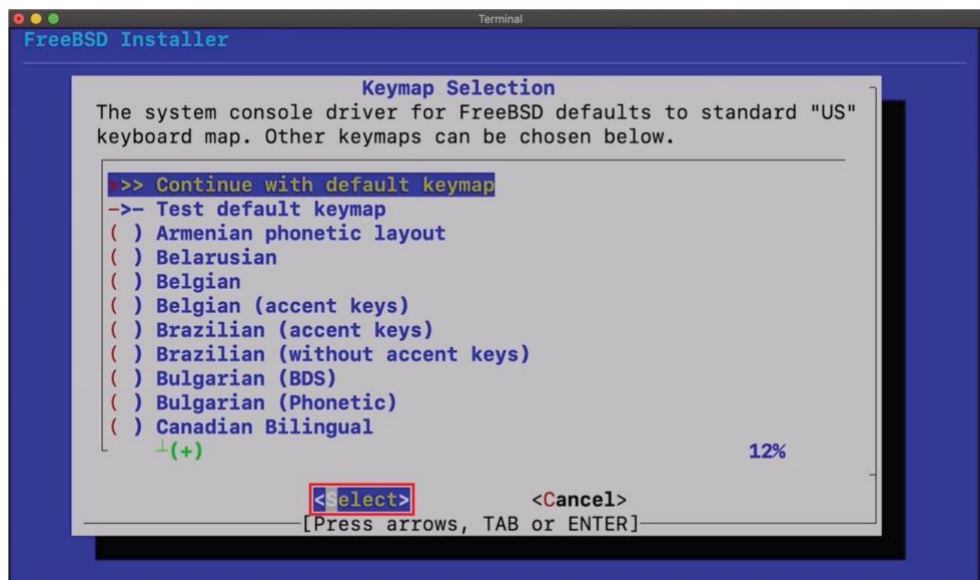


Graphic 2 Starting the AKIPS installation

At the **RISK OF DATA LOSS** screen, select **Yes**.

At the **Keymap Selection** screen:

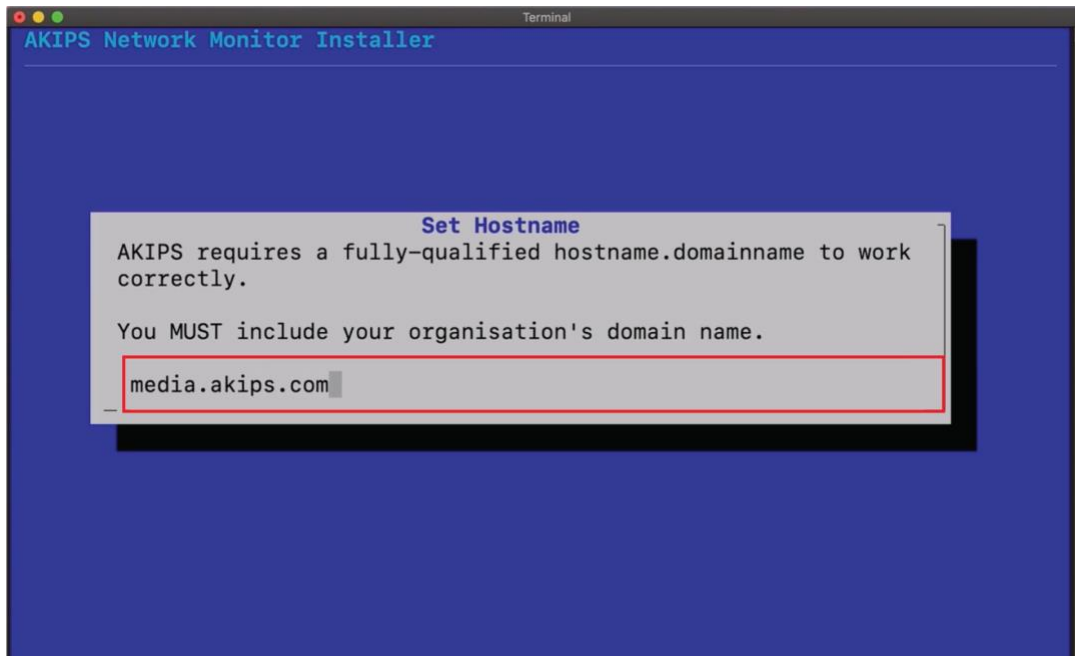
- hit **Enter** to select the default or
- scroll to select your preference and then hit **Enter**.



Graphic 3 Configuring the keymap

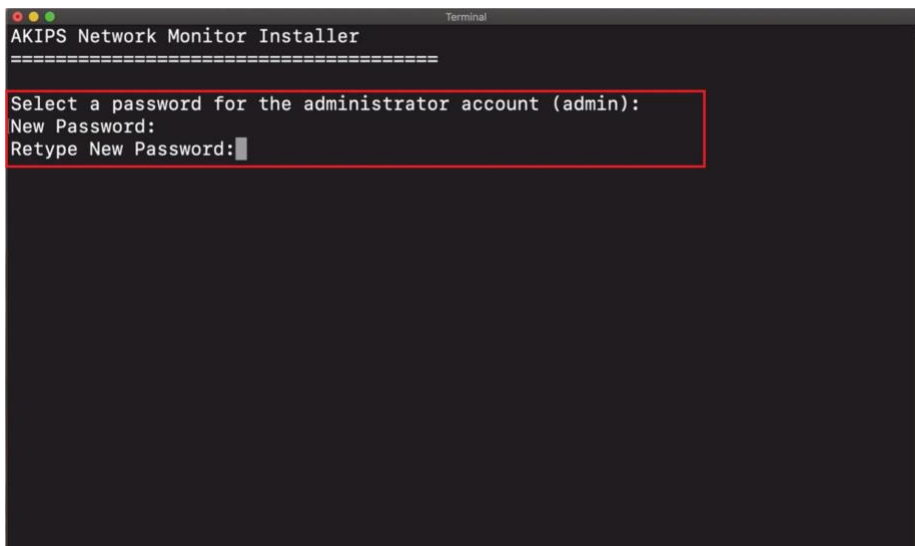
INSTALLING AKIPS

At the **Set Hostname** screen, type a valid hostname.domain Hit **Enter**.



Graphic 4 Setting the hostname

Enter a password. This will apply to the root, akips and admin accounts.
Retype the password to confirm.
Hit **Enter**.



Graphic 5 Setting the password

INSTALLING AKIPS

At the **Network Configuration** screen, select a network interface.

Select **OK**.

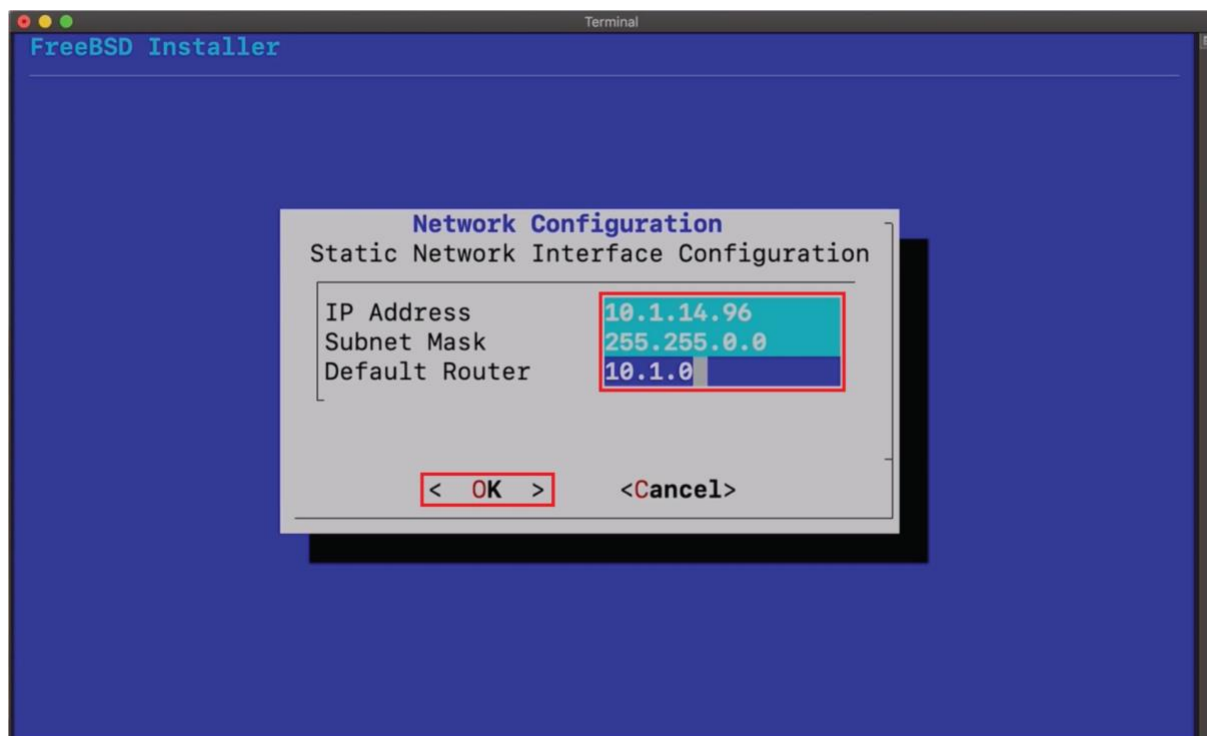
At the **IPv4** prompt, select **Yes**.

At the **DHCP** prompt, select **No**.

At the **Network Configuration: Static Network Interface Configuration** screen, complete the following text fields:

- IP address
- subnet mask
- default router.

Select **OK**.



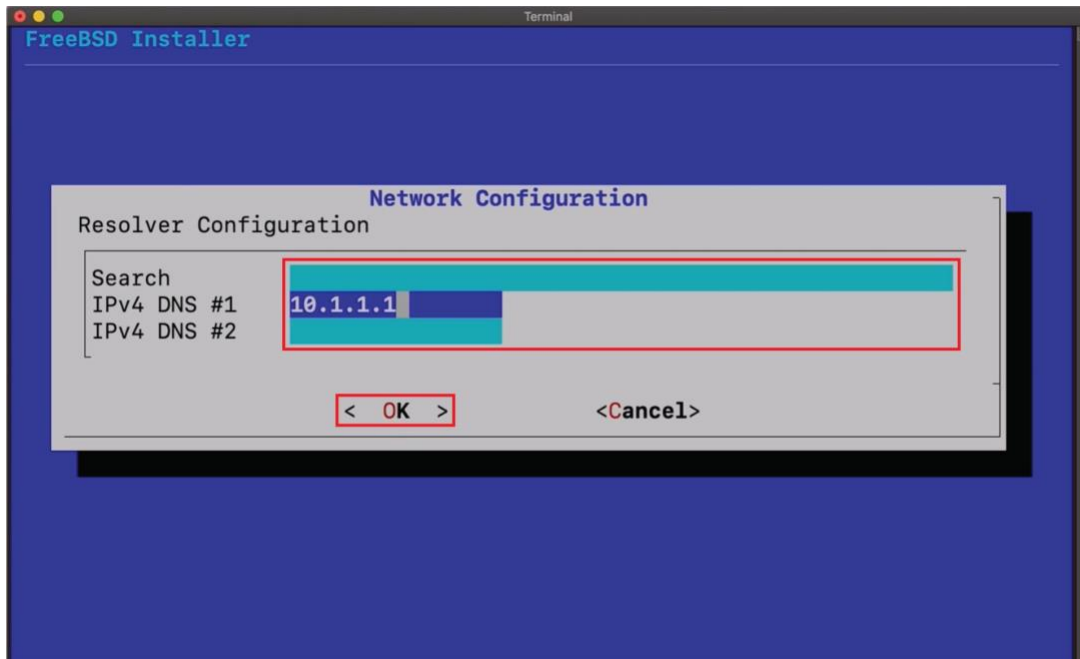
Graphic 6 Configuring the static network interface

At the **IPv6** prompt, select **No**.

At the **Network Configuration: Resolver Configuration** screen, enter at least one DNS address.

Select **OK**.

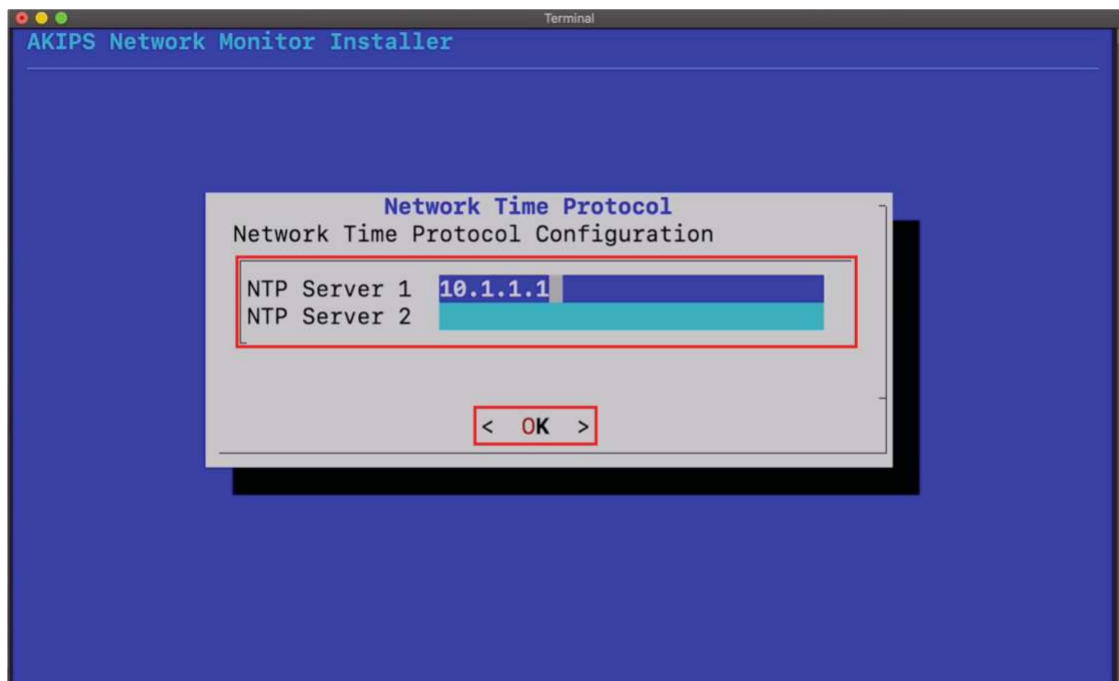
INSTALLING AKIPS



Graphic 7 Configuring the network resolver

At the **Network Time Protocol Configuration** screen, enter the NTP server address.

Select **OK**.



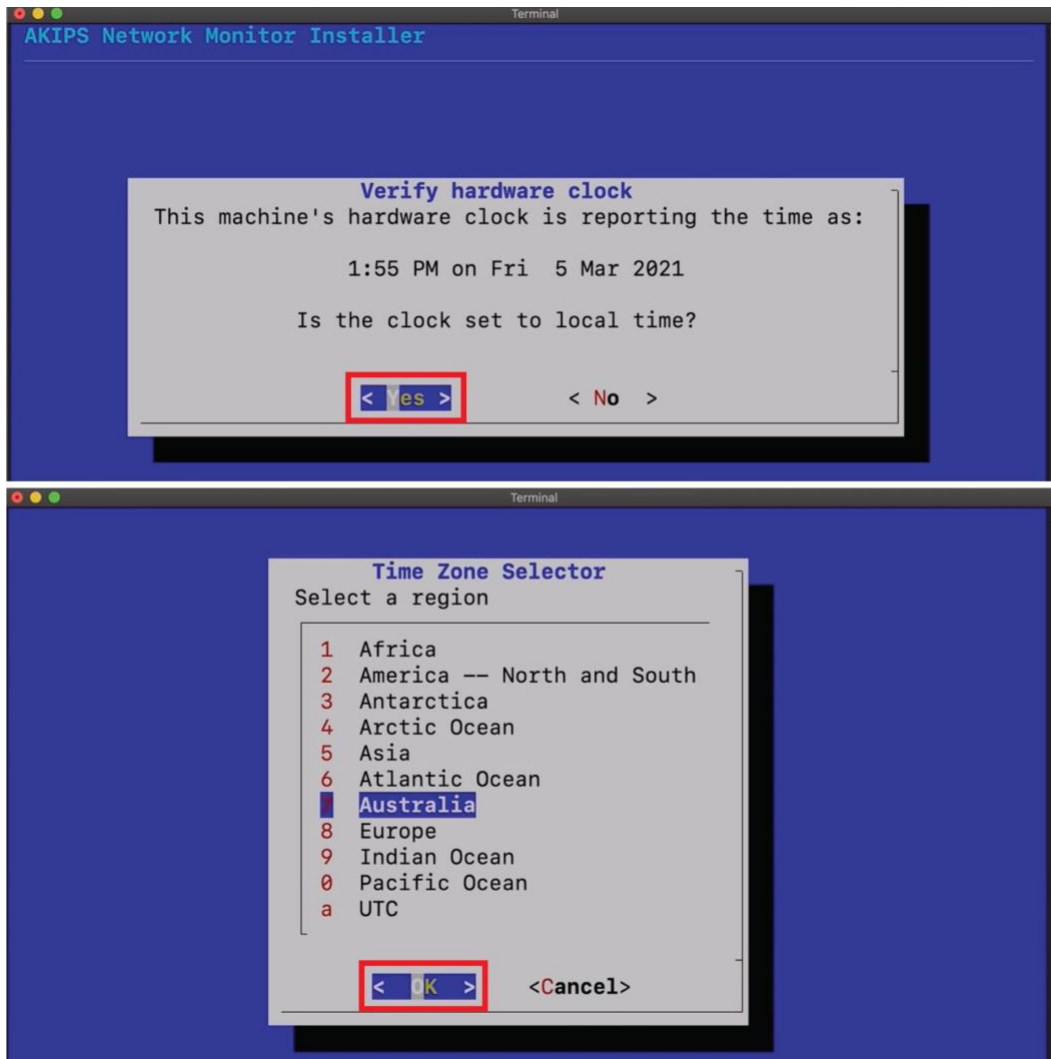
Graphic 8 Configuring the network time protocol

INSTALLING AKIPS

Review the **Verify hardware clock** screen:

- if the clock is set to local time, select **Yes**
- if the clock is not set to local time, select **No**.

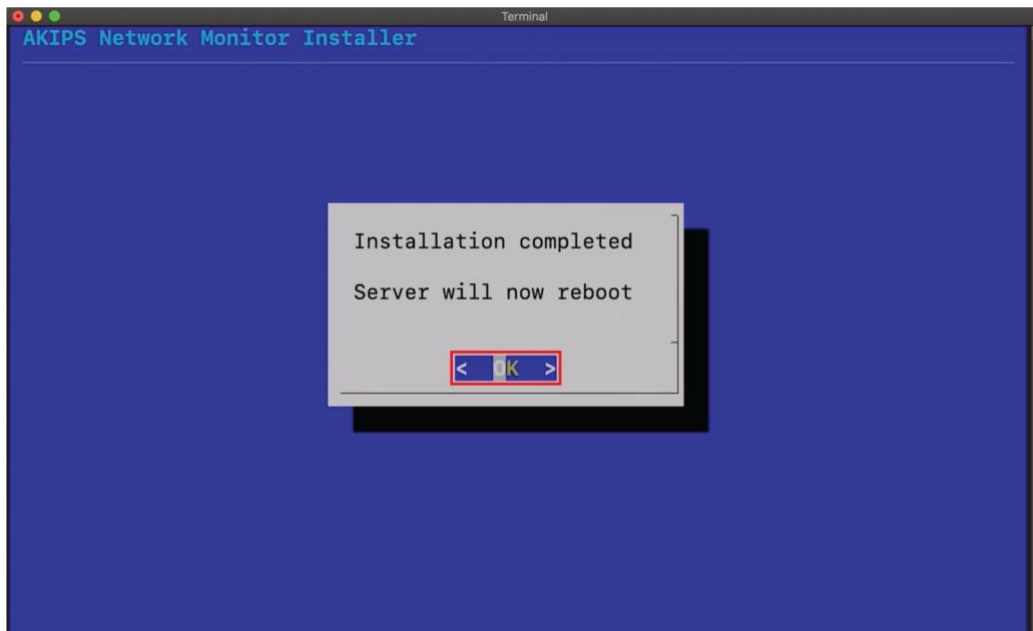
On the following timezone screens, select your applicable timezone.



Graphics 9 & 10 Configuring the hardware clock and timezone

INSTALLING AKIPS

After AKIPS has finished installing, select **OK** to reboot the server.



Graphic 11 Rebooting the server

AKIPS will run a number of processes which will not require you to take any action.

AKIPS will prompt you to log in with your admin account.

To finalise the installation process, click **Accept License**.

4 Discovering your network

AKIPS runs its network discover based on IP address ranges and SNMP parameters.

4.1 Discover your network:

Log into AKIPS with your admin account.

Go to **Admin > Discover > Discover / Rewalk**.

Using the guidance on the right-hand side, complete the **Discover / Rewalk** panel.

Ensure that you complete both:

- Ping Scan Ranges
- SNMP Parameters.

Click **Save Changes**.

The screenshot shows the AKIPS web interface for configuring network discovery. The top navigation bar includes 'Dashboards', 'Reports', 'Tools', 'Admin', 'New', and 'PDF'. The user is logged in as 'admin'. The main content area is titled 'Discover / Rewalk' and contains three sections:

- 1. Daily Discovery Schedule:** Includes dropdown menus for 'Discover' (set to 3am) and 'Rewalk' (set to 1am).
- 2. Ping Scan Ranges:** A text area containing configuration rules:


```
rate 2000
10.2.0.0/16
10.131.0.0/16
```
- 3. SNMP Parameters:** A text area containing SNMP configuration:


```
version 2 community foobar
version 2 community public
version 3 user barney sha password aes128 password
version 3 user fred sha password aes256 password
version 3 user fred sha password des password
version 3 user wilma md5 password
```

The right-hand side sidebar provides detailed instructions for each section:

- Discover / Rewalk:**
 - Discover new devices:** Perform ping and SNMP scans of the address ranges specified in Ping Scan Ranges. This will scan for and add new devices. Any existing device found in the scan will have its configuration updated. Note that this will only update existing devices found in Ping Scan Ranges.
 - Rewalk existing devices:** Detect any changes to the network configuration of devices polled by AKIPS. This will not scan for new devices.
- 1. Daily Discovery Schedule:** Schedules a daily automated discovery or rewalk of your network. The best time to schedule a discovery is while the network is being used (i.e. during business hours).
- 2. Ping Scan Ranges:** This defines the IPv4 and IPv6 address ranges the discover will use when performing a ping sweep.
 - Each rule is evaluated and executed in order.
 - Lines starting with a '#' are ignored.
 - The addresses for each rule are pinged intelligently so as not to affect any single link/interface.
 - Tunable options include:
 - rate:** Limits the number of ping requests sent per second. The default rate is 1000. The maximum rate is 100,000.
 - pass:** This is the number of times each IP address is pinged. The default of 2 passes gives more reliable results than a single pass because it allows time for remote devices to wake up from sleep modes before they respond. The maximum number of passes is 3.
 - limit:** This is the maximum number of seconds a rule is allowed per pass. If the calculated runtime of a rule is longer than the limit, then the rule is skipped. The default time limit is 60 seconds. The maximum value for limit is 1800 seconds (30 minutes).
 - wait:** The number of seconds to wait for a ping response. The default is 3 seconds. The maximum wait value is 10 seconds.

Examples:

```
# Set some "go fast" things
rate 10000
pass 2

# Scan the 10.1.1.0 subnet
```

Graphic 12 Configuring the discover settings

DISCOVERING YOUR NETWORK

Click **Discover**.

When AKIPS has finished discovering your network, it will display a message in green.

Wait for five minutes, then check the following tables:

- **Reports > Device > IPv4 Ping Statistics**
 - Reports > Interface > Statistics

If the tables populate with data, then AKIPS is working.

5 AKIPS licence

To view the video *AKIPS licence*, visit <https://vimeo.com/manage/videos/514080623>

5.1 Request an AKIPS evaluation key:

Log into AKIPS with your admin account.

On the homepage, click **Software Activation**. Click **Request Evaluation Key**.

Complete all mandatory text fields. Click **Request a Trial Key**.

AKIPS will display a message to confirm that we are processing your request.

5.2 Activate an AKIPS licence:

After the AKIPS team has emailed a licence key to you, copy the key. Log into AKIPS with your admin account.

On the homepage, click **Software Activation**. Paste the key into the **Licence Key** text field.

Click **Activate Licence**.

When AKIPS has successfully activated your licence, it will display a message in green.

6 Upgrading AKIPS

AKIPS recommends that you always upgrade to the latest version.

To view the video *Upgrading AKIPS*, visit <https://vimeo.com/manage/videos/516553339>

6.1 Case study

When a customer tried to upgrade AKIPS, the SHA256 matched the release notes, yet they received the error message 'Package has incorrect checksum'.

He was able to successfully upgrade when he used a different browser (Firefox instead of Chrome).

6.2 Upgrade AKIPS:

Go to <https://www.akips.com/download>

In the **Install & upgrade** section, click **Download**.

Click **Install & Upgrade ISO**.

Save the file onto your computer.

The software will download, displaying the version number in the filename.
E.g. akips-21.7-upgrade.iso

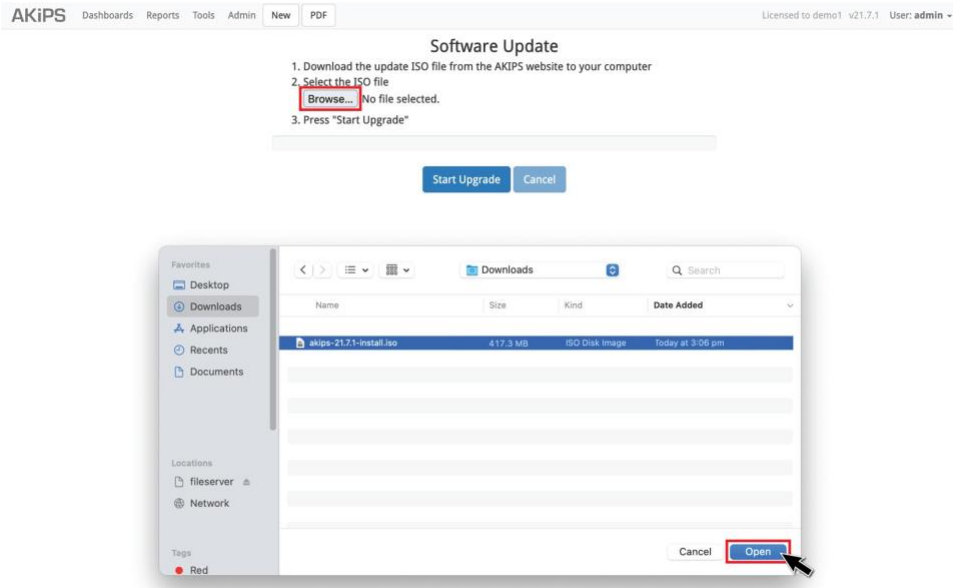
Log into AKIPS with your admin account.

Go to **Admin > System > Update**.

Click **Browse** to locate the downloaded file.

Click **Open**.

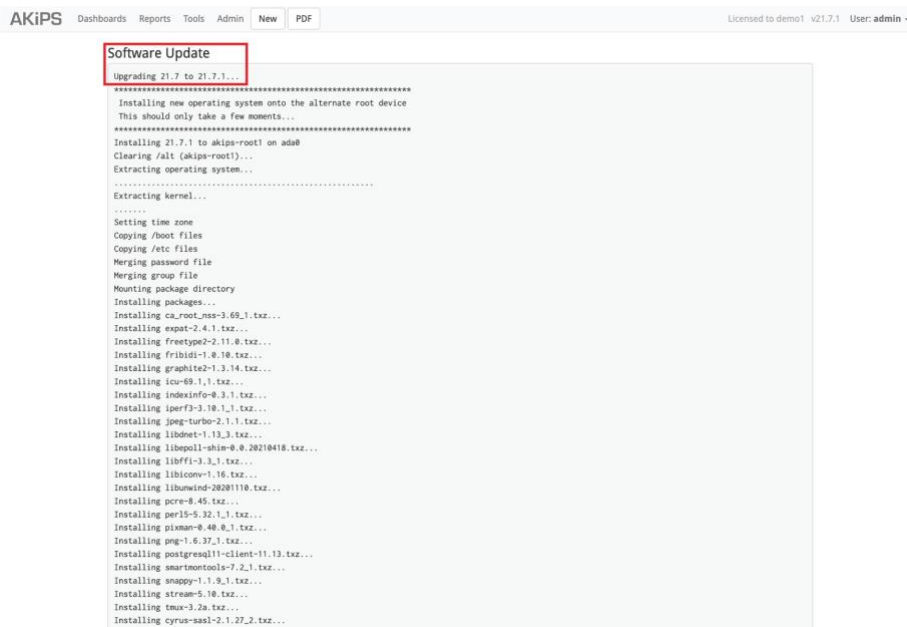
UPGRADING AKIPS



Graphic 13 Locating and opening the software update file

Click **Start Upgrade**.

After the upload has completed, AKIPS will automatically upgrade the software.



Graphic 14 Upgrading AKIPS

UPGRADING AKIPS

If the upgrade is for the AKIPS software only:

AKIPS will update the version details on the menu bar and resume monitoring your network.

If the upgrade is for both the OS and AKIPS software:

AKIPS will reboot your OS.

Refresh your browser to continue using AKIPS.